

SOLD



215/26A Lord Sheffield Circuit, Penrith

Joseph Choi and the team - RE/MAX U are proud to present this well-designed over sized 1 bedroom apartment at Sheffield Quarter's Lumina!

Features Includes:
 + 200m from Penrith Station
 + North Aspect
 + Perfectly maintained apartment like a brand new(1 year and 6 months old)
 + Full timber upgaded throughout
 + Oversized 1 bedroom with built-in wardrobe
 + Built-in fridge...
 ...

1 1 1

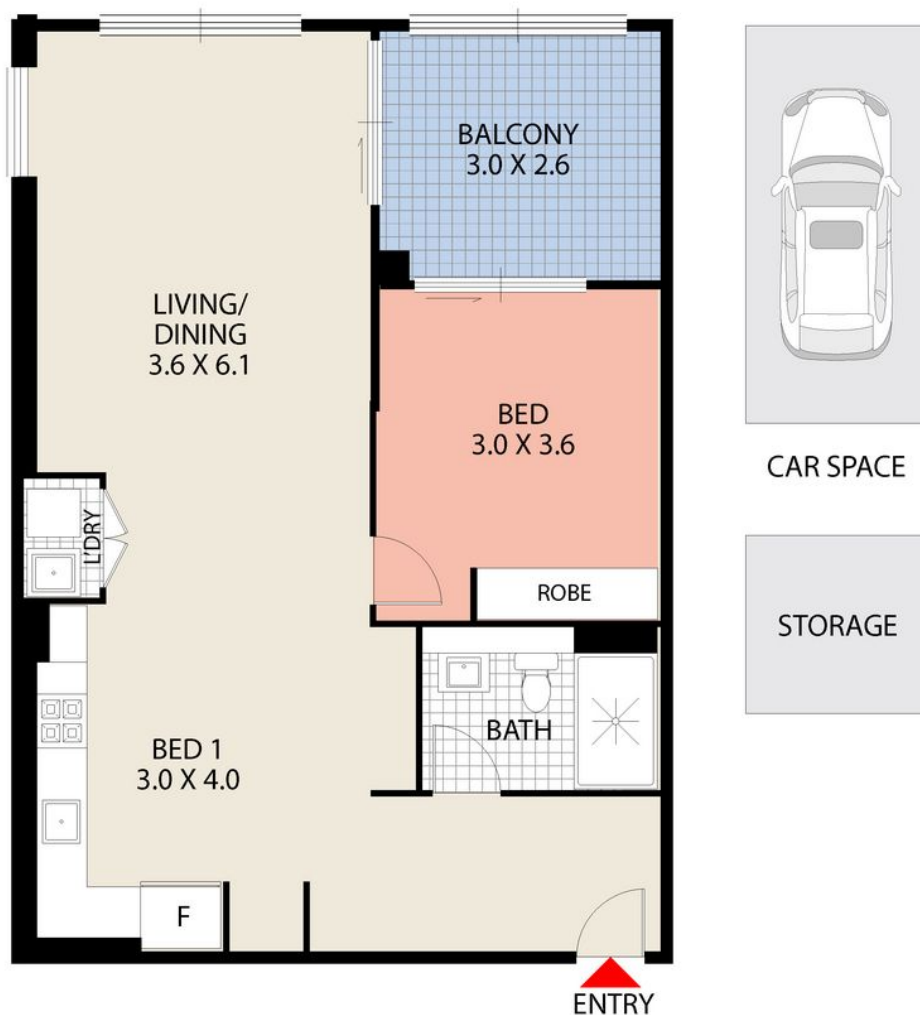
Price: \$460,000

View: <https://remax-u.com.au/7046454>

Joseph Choi
M 0433204724



RE/MAX Property Specialits,
 Narrabeen



Joseph Choi

0433 204 724

APPROX. INT. AREA : 58m²

APPROX. EXT. AREA : 8m²

APPROX. TOTAL AREA : 66m²

215/26A Lord Sheffield Circuit, Penrith



RE/MAX

NOT TO SCALE. ALL MEASUREMENTS ARE APPROXIMATE METRES, DRAWN FOR PRESENTATION PURPOSES ONLY
DISCLAIMER: While care has been taken in the preparation of these particulars, no responsibility is accepted for the accuracy of the whole or any part and interested persons are advised to make their own enquiries and satisfy themselves in all respects.