

**SOLD**



## 1-3 Maree Street, Wondunna

This former childcare center offers a variety of opportunities for businesses or developers.

Located in a very central part of town, this property provides great access to all parts of Hervey Bay quickly. There are also plans for a new multi lane road to extend Boundary Road to run Westerly from Denmans Camp Road which will improve access even further.

With large rooms and a multitude of facilities and parking, this property could be converted into a very large multi family residence, a number of units or for a company base.

There is parking on a concrete frontage for at least a dozen vehicles plus space for sheds or carports....

...

6 4 12

**Price:** \$450,000

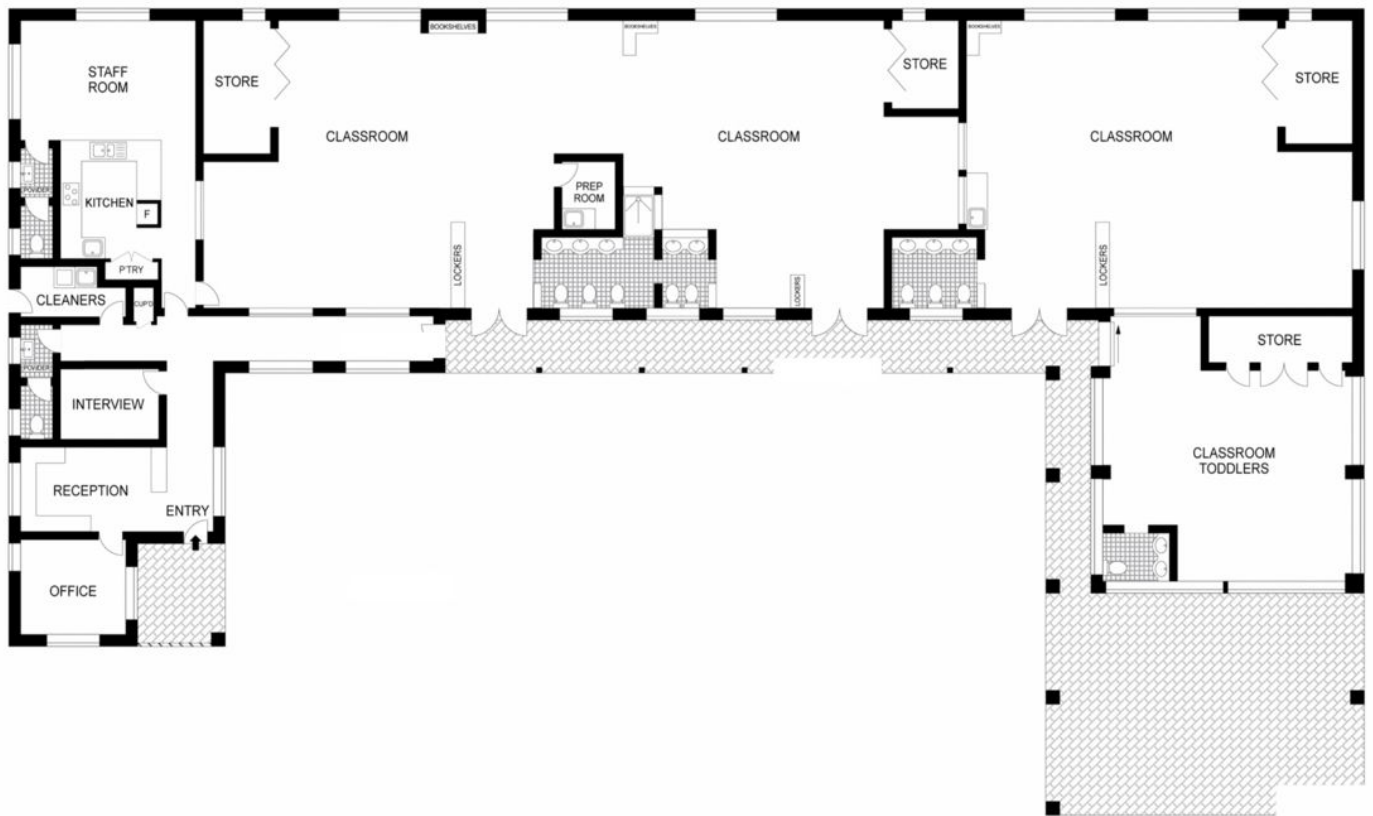
**View:** <https://remax-u.com.au/5361201>

**Stephen Wright**

**M 0415 222 333**



RE/MAX Property Specialists,  
Narrabeen



North Point

## 1 Maree Street, WONDUNNA

This plan is for illustration purposes only, it is conceptual no guarantee on the Accuracy of this plan. Dimensions and areas area as accurate as possible. External parties should rely on their own enquires.

**RE/MAX Partners**