

**SOLD**



## 22 Allister Crescent, Rothwell

This 11yo home just ticks so many boxes

Great and spacious layout

Multiple living areas

Great functional kitchen with dishwasher

Heaps of storage

Master bedroom with ensuite

A secure workshop / man cave

Great sized and practical yard

Room for the largest of pools

5m Side access for boats, caravans or both

Great handy location

Lovely North facing Patio

...

- Ticked
- Ticked
- Ticked
- Ticked
- Ticked
- Ticked
- Ticked
- Ticked
- Ticked
- Ticked...

3 2 2

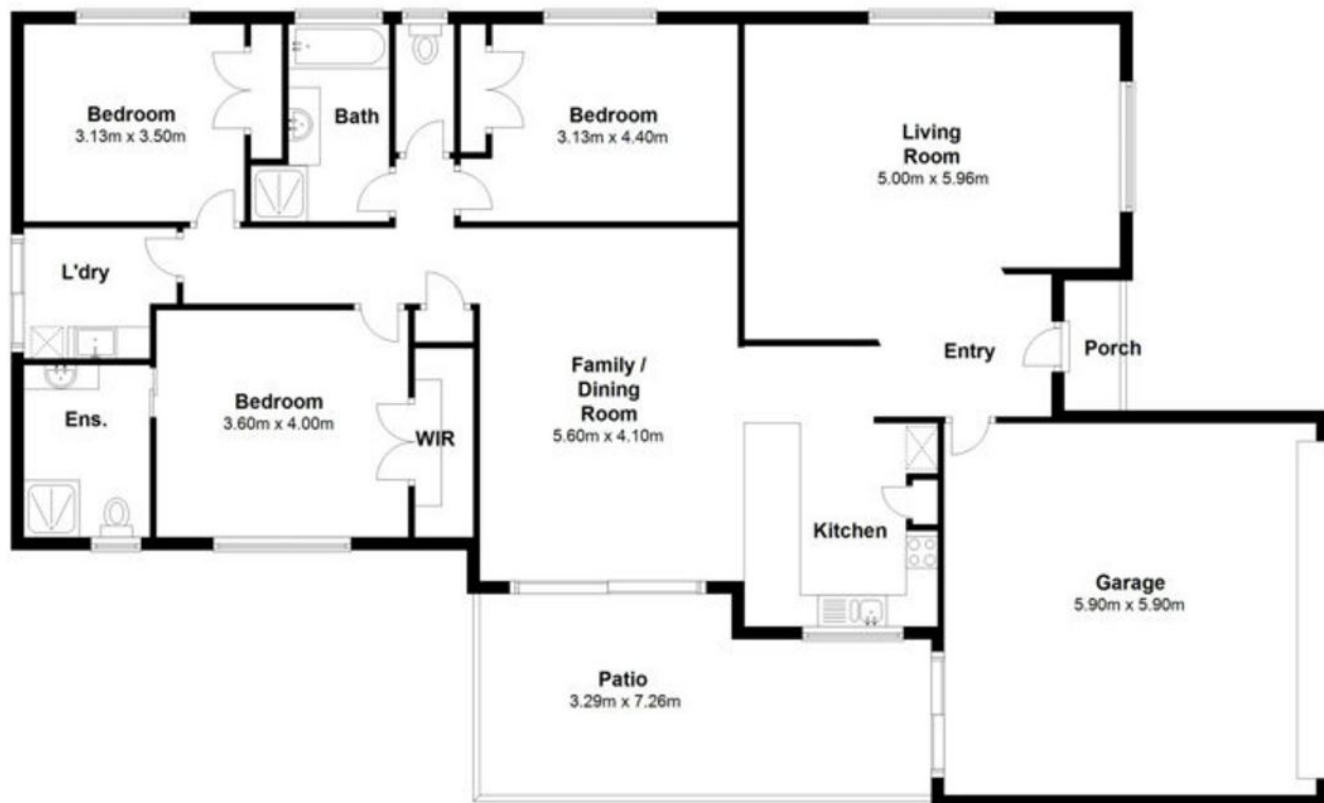
**Price:** \$458,777

**View:** <https://remax-u.com.au/4887096>

**Belinda Davey**

**M**

RE/MAX Property Specialits,  
Narrabeen



Total area: approx. 213.7 sq. metres